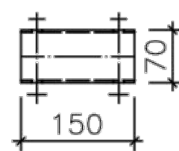
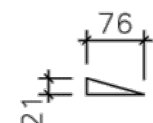


2x RHS70x3 **2**
1:10 S235JR

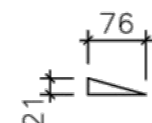


1x BL4x76x21 **9**
1:10 S235JR

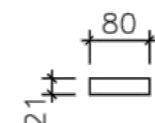


x M12 5.6 **Niezdefiniowany**
1:10 5.6

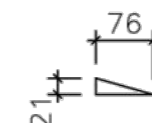
4x BL4x76x21 **5**
1:10 S235JR



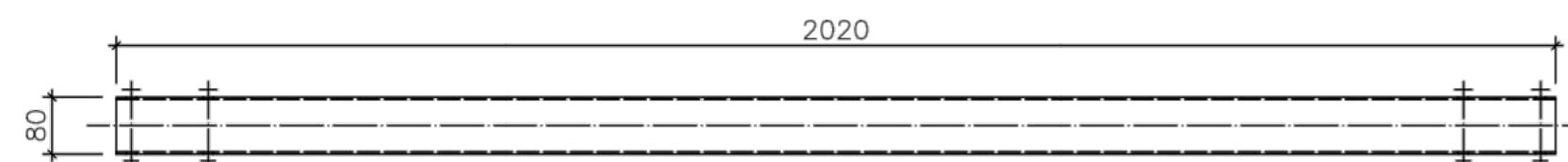
2x BL4x80x21 **7**
1:10 S235JR



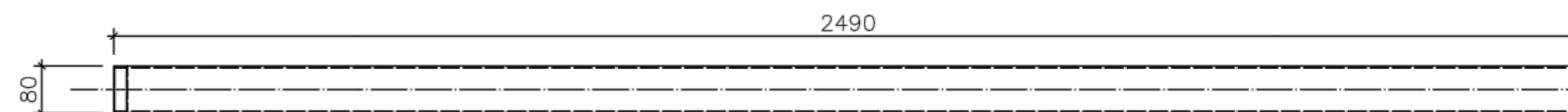
4x BL4x76x21 **5**
1:10 S235JR



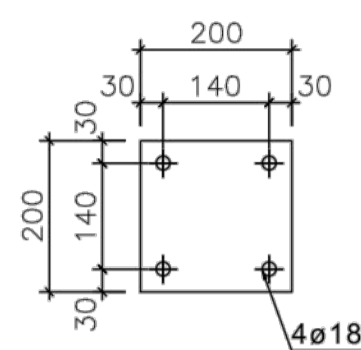
1x RHS80x3 **8**
1:10 S235JR



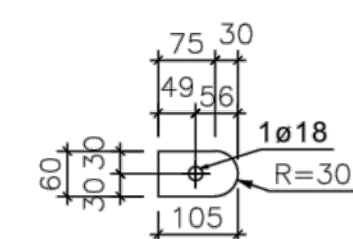
1x RHS80x3 **S-2**
1:10 S235JR



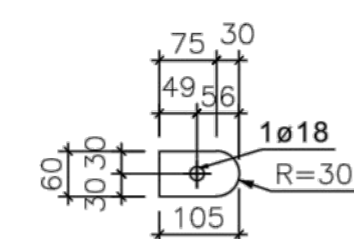
2x BL16x200x200 **6**
1:10 S235JR



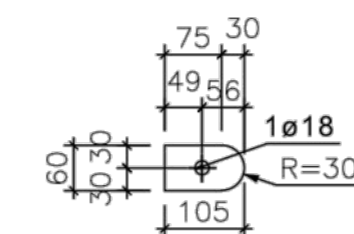
18x BL4x105x60 **3**
1:10 S235JR



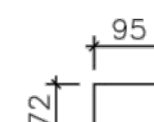
18x BL4x105x60 **3**
1:10 S235JR



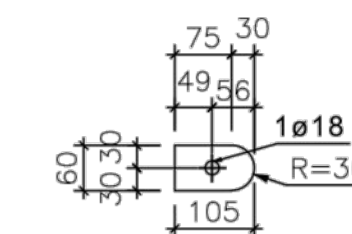
18x BL4x105x60 **3**
1:10 S235JR



8x BL4x95x72 **4**
1:10 S235JR



18x BL4x105x60 **3**
1:10 S235JR

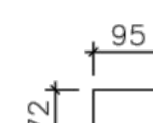


2x RHS70x3 **2**
1:10 S235JR

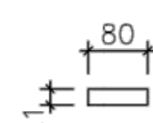


x HILTI HIT-HY 20 HIS M16x170 **Niezdefiniowany**
1:10 Stal węglowa

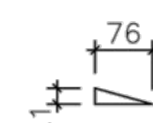
8x BL4x95x72 **4**
1:10 S235JR



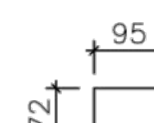
2x BL4x80x21 **7**
1:10 S235JR



4x BL4x76x21 **5**
1:10 S235JR

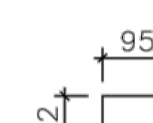


8x BL4x95x72 **4**
1:10 S235JR



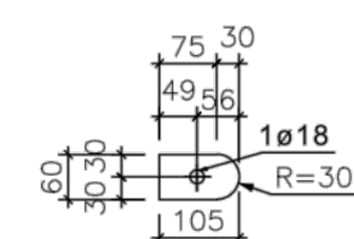
x M12 5.6 **Niezdefiniowany**
1:10 5.6

8x BL4x95x72 **4**
1:10 S235JR

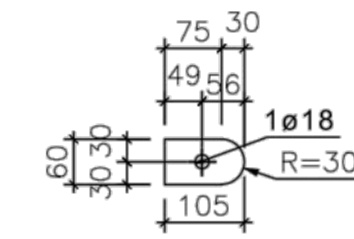


x HILTI HIT-HY 20 HIS M16x170 **Niezdefiniowany**
1:10 Stal węglowa

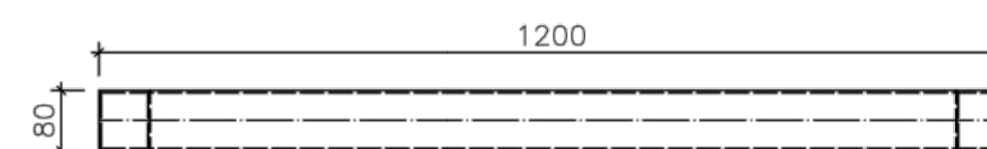
18x BL4x105x60 **3**
1:10 S235JR



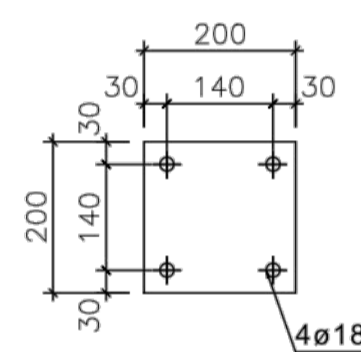
18x BL4x105x60 **3**
1:10 S235JR



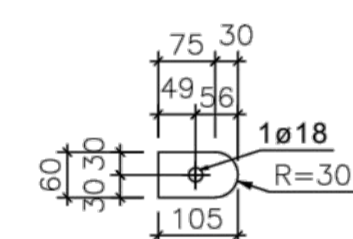
4x RHS80x3 **1**
1:10 S235JR



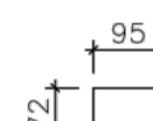
2x BL16x200x200 **6**
1:10 S235JR



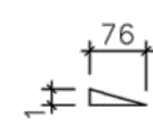
18x BL4x105x60 **3**
1:10 S235JR



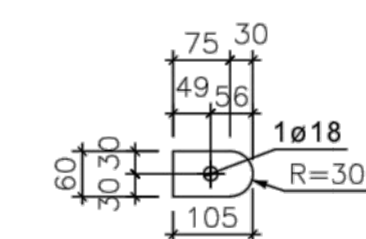
8x BL4x95x72 **4**
1:10 S235JR



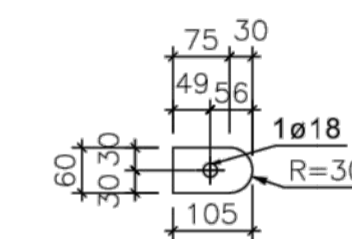
4x BL4x76x21 **5**
1:10 S235JR



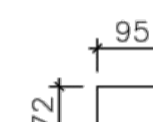
18x BL4x105x60 **3**
1:10 S235JR



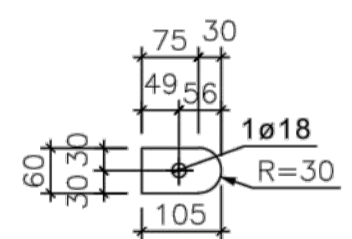
18x BL4x105x60 **3**
1:10 S235JR



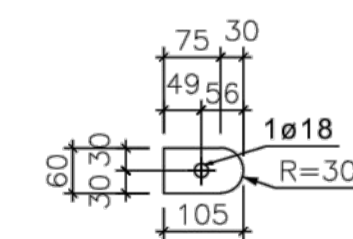
8x BL4x95x72 **4**
1:10 S235JR



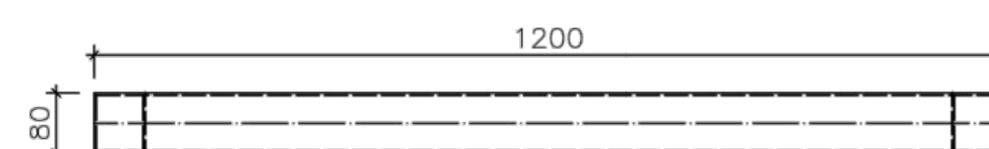
18x BL4x105x60 **3**
1:10 S235JR



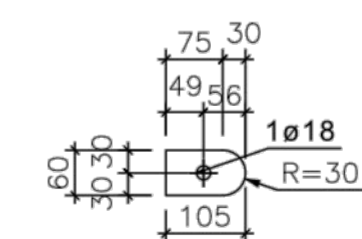
18x BL4x105x60 **3**
1:10 S235JR



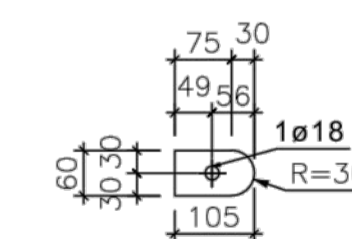
4x RHS80x3 **1**
1:10 S235JR



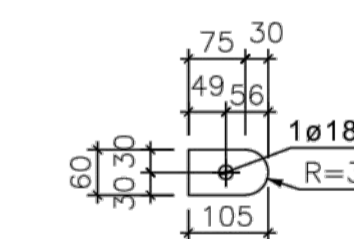
18x BL4x105x60 **3**
1:10 S235JR



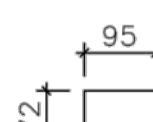
18x BL4x105x60 **3**
1:10 S235JR



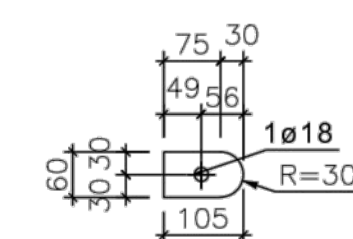
18x BL4x105x60 **3**
1:10 S235JR



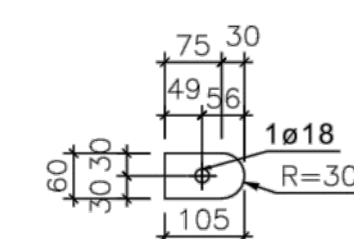
8x BL4x95x72 **4**
1:10 S235JR



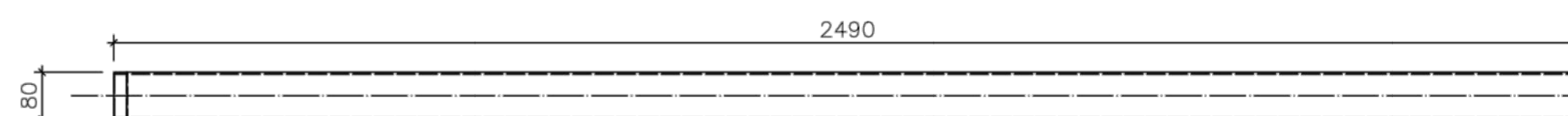
18x BL4x105x60 **3**
1:10 S235JR



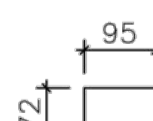
18x BL4x105x60 **3**
1:10 S235JR



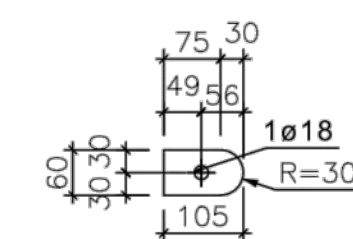
1x RHS80x3 **S-1**
1:10 S235JR



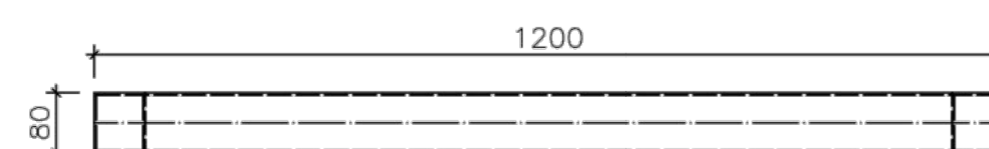
8x BL4x95x72 **4**
1:10 S235JR



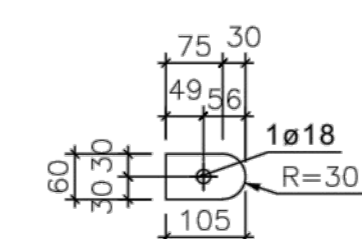
18x BL4x105x60 **3**
1:10 S235JR



4x RHS80x3 **1**
1:10 S235JR



18x BL4x105x60 **3**
1:10 S235JR



4x RHS80x3 **1**
1:10 S235JR



ZADASZENIE KIOSKU INFO - WYKROJE BLACH

BUDOWA INFRASTRUKTURY PIESZO - ROWEROWEJ W POWIECIE OPOLSKIM - II ETAP
ORAZ BUDOWA CENTRUM PRZESIADKOWEGO W GMINIE LEWIN BRZESKI

PS PROJEKT	ADRES:	49-340 LEWIN BRZESKI UL. KOŚCIUSZKI	skala:	1:10
	NWESTOR:	Gmina Lewin Brzeski ul. Rynek 1	data:	08.2018
www.ps-projekt.net.pl	STADIUM:	PROJEKT BUDOWLANY	PROJEKTANT:	inż. arch. Ryszard Sniezek
PS-PROJEKT Sp. z o.o. 45-131 Opole ul. Józefa Cypora 4/2 53-103 828 e-mail: biuro@ps-projekt.net.pl	KONSTRUKCJA	OPRACOWAŁ:	JACY:	mgr inż. Paweł Sniezek mgr inż. arch. Agata Mikula
			nr rys.:	K-4.4